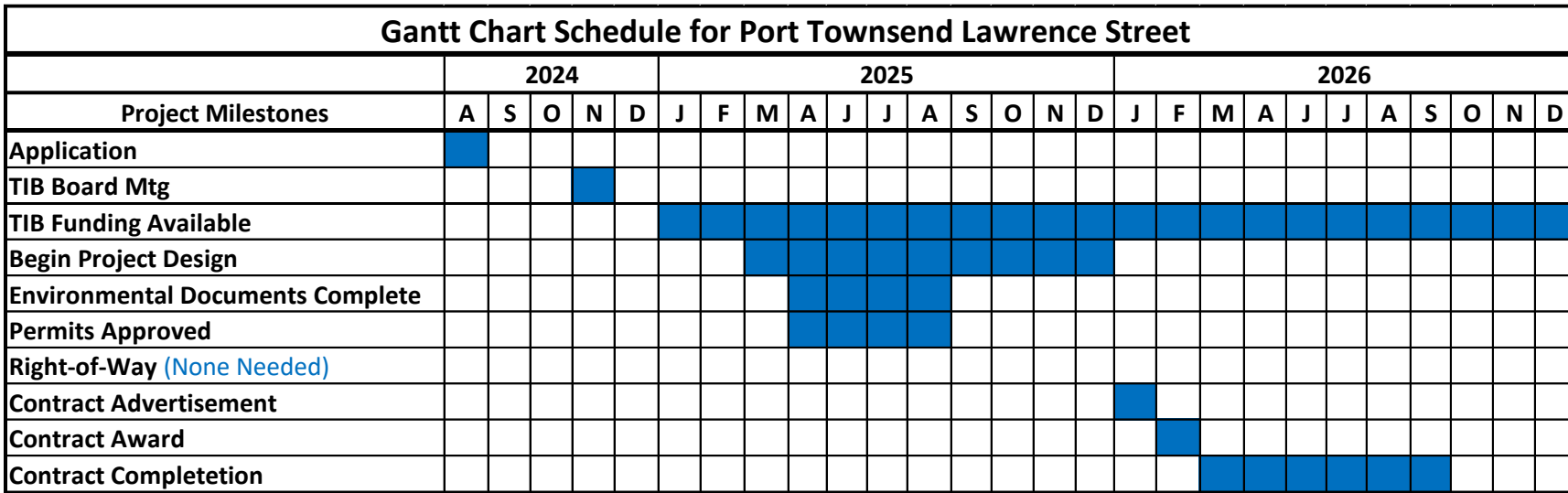


**Six Year Transportation Improvement Program (2024 - 2029)**

County Name: Jefferson County  
MPO/RTPO: NON/PEN

Port Townsend  
Co. No.: 16  
City No.: 1005

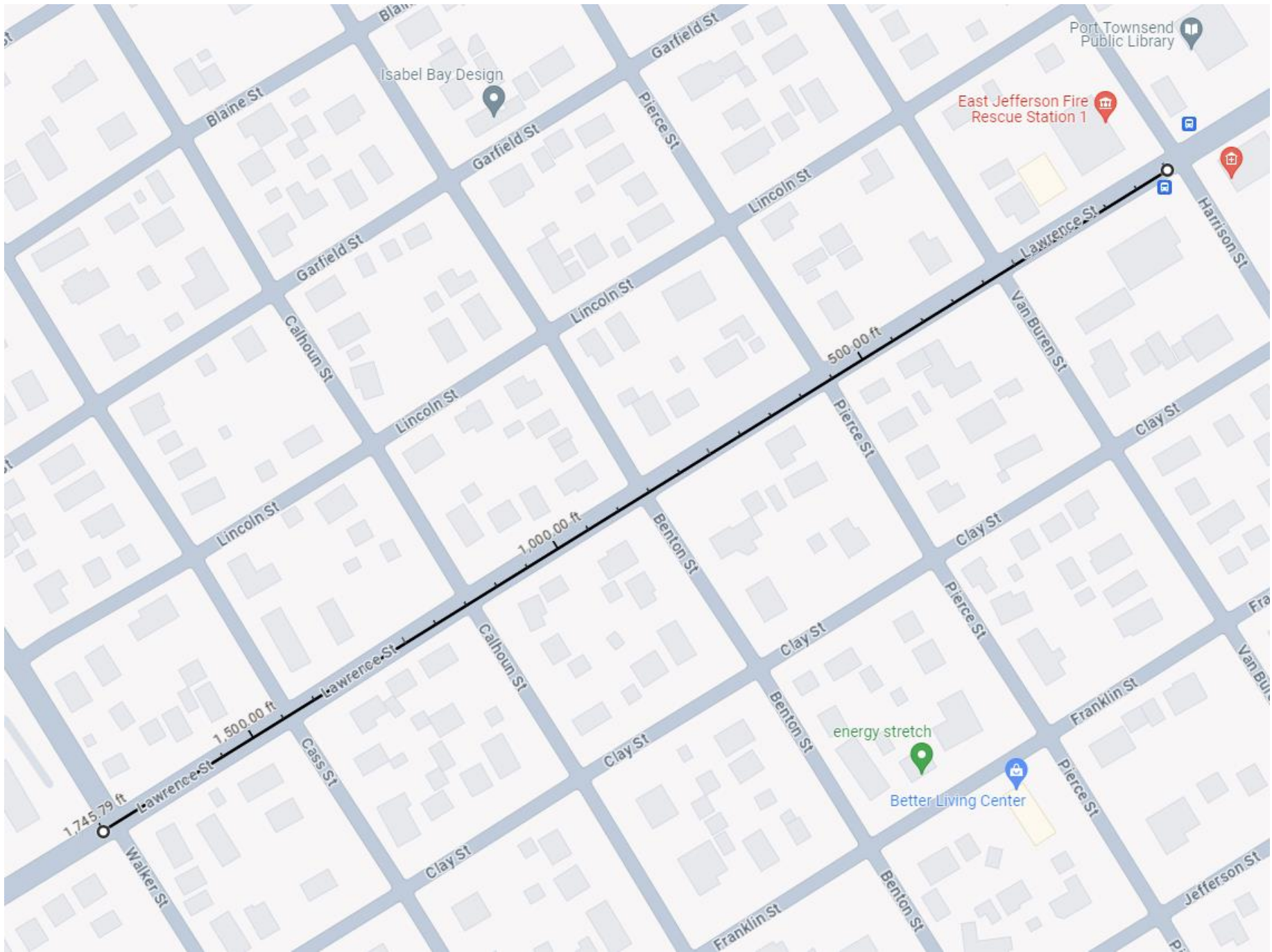
Functional Class	Priority Number	Project	Fund Source Information						Expenditure Schedule						Environment Type	RW Required		
			Project Length	Phase	Phase Start Year	Funding Status	Federal Fund Code	Federal Funds	State Fund Code	State Funds	Local Funds	1st	2nd	3rd			4th	5th
	29	Lawrence Street Improvements from: Kearney Street to: Harrison Street Grind, base upgrade, repave, sidewalks, shoulder improvements, ADA upgrades	0.50	ALL	2029	P		OTHER	4,000,000	1,000,000						5,000,000	CE	N



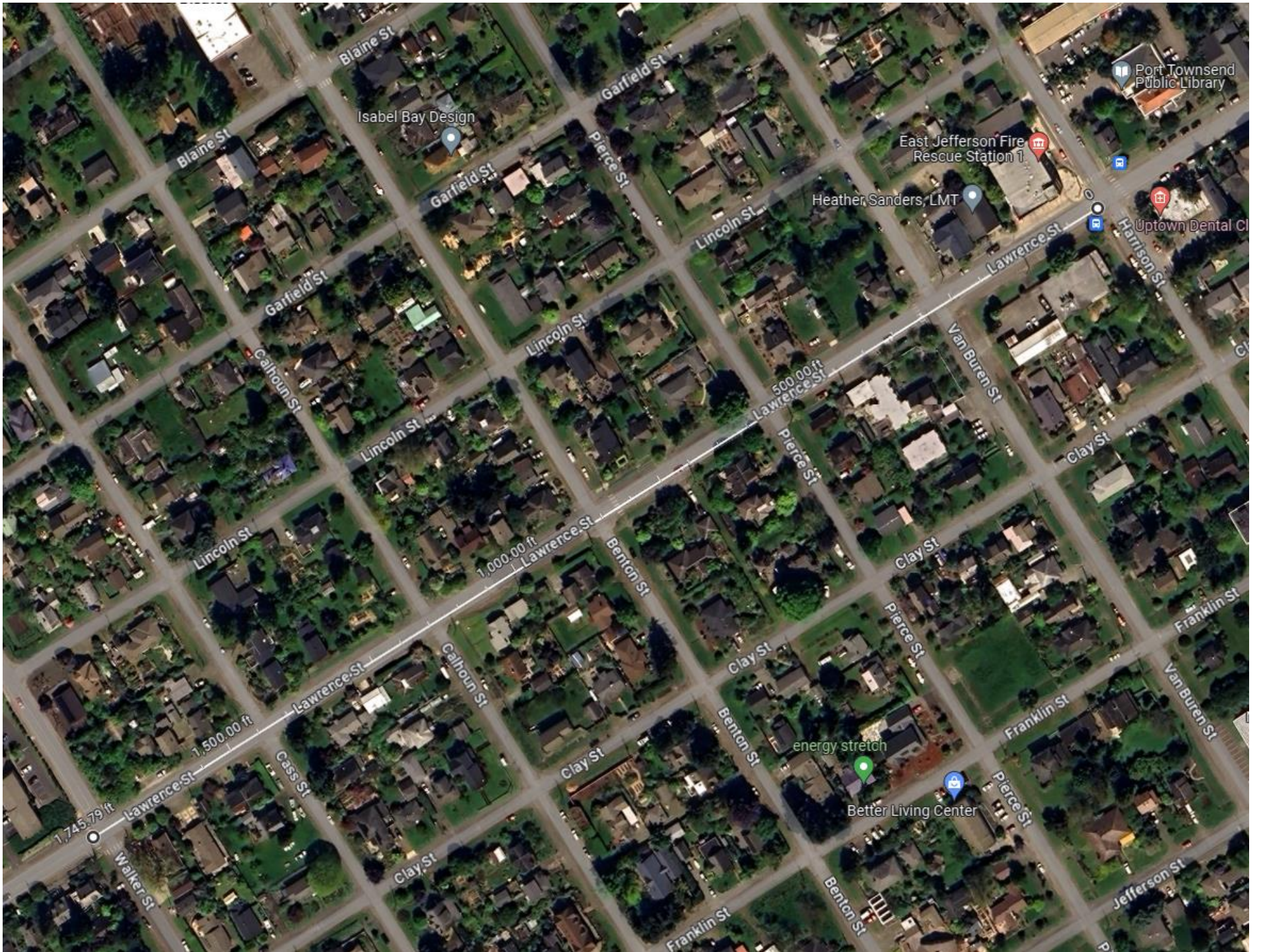
**Safety/Crash Analysis**

Property damage only incidents **4**      Incidents with injuries **1**      Incidents with fatalities **0**

Crash Location/Type	PDO	Injuries	Fatalities	Primary Countermeasure
Lawrence/Walker		1		Curb extensions, crosswalks, signs, tighter turn radius
Lawrence/Walker	1			Same
Lawrence/Walker	1			Same
Lawrence/Walker	1			Same
Lawrence/Harrison	1			Same



**Lawrence Street from Harrison Street to Walker Street = 0.33 miles (1,745 linear feet)**



# Detailed Plan View CAD Drawing Project Map

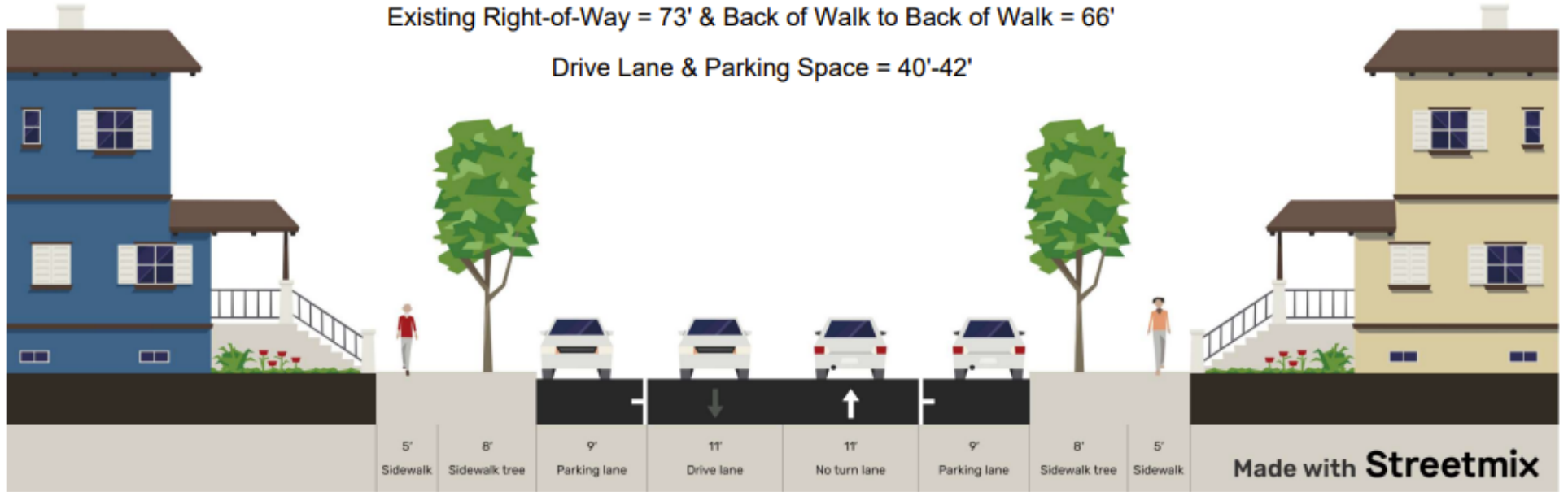


# Lawrence Street (Harrison to Walker) - Existing

Viewpoint = Northeast to Southwest

Existing Right-of-Way = 73' & Back of Walk to Back of Walk = 66'

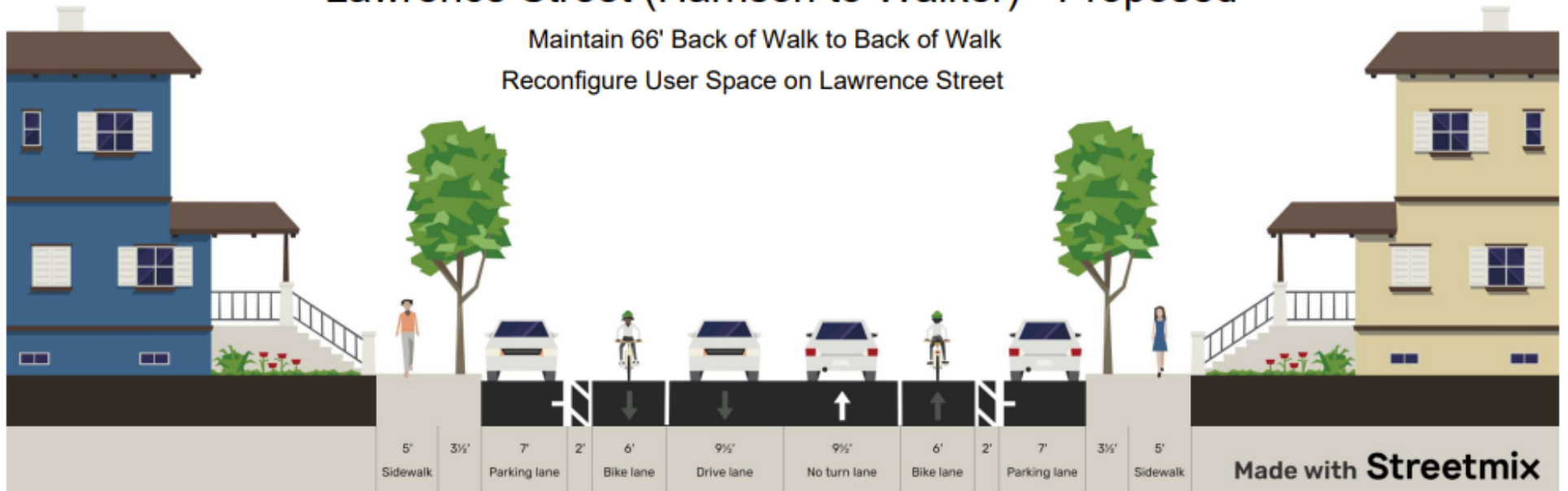
Drive Lane & Parking Space = 40'-42'



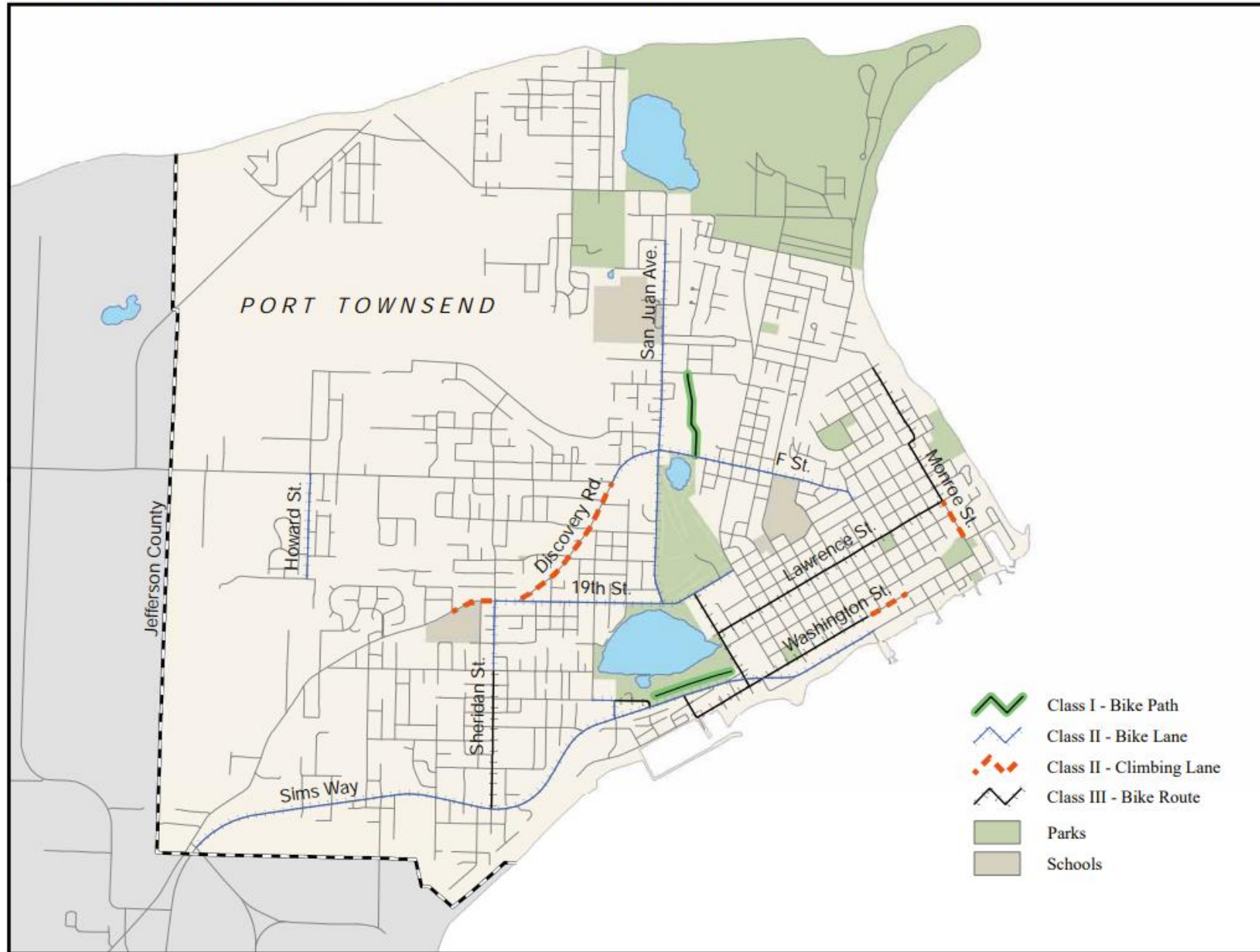
# Lawrence Street (Harrison to Walker) - Proposed

Maintain 66' Back of Walk to Back of Walk

Reconfigure User Space on Lawrence Street



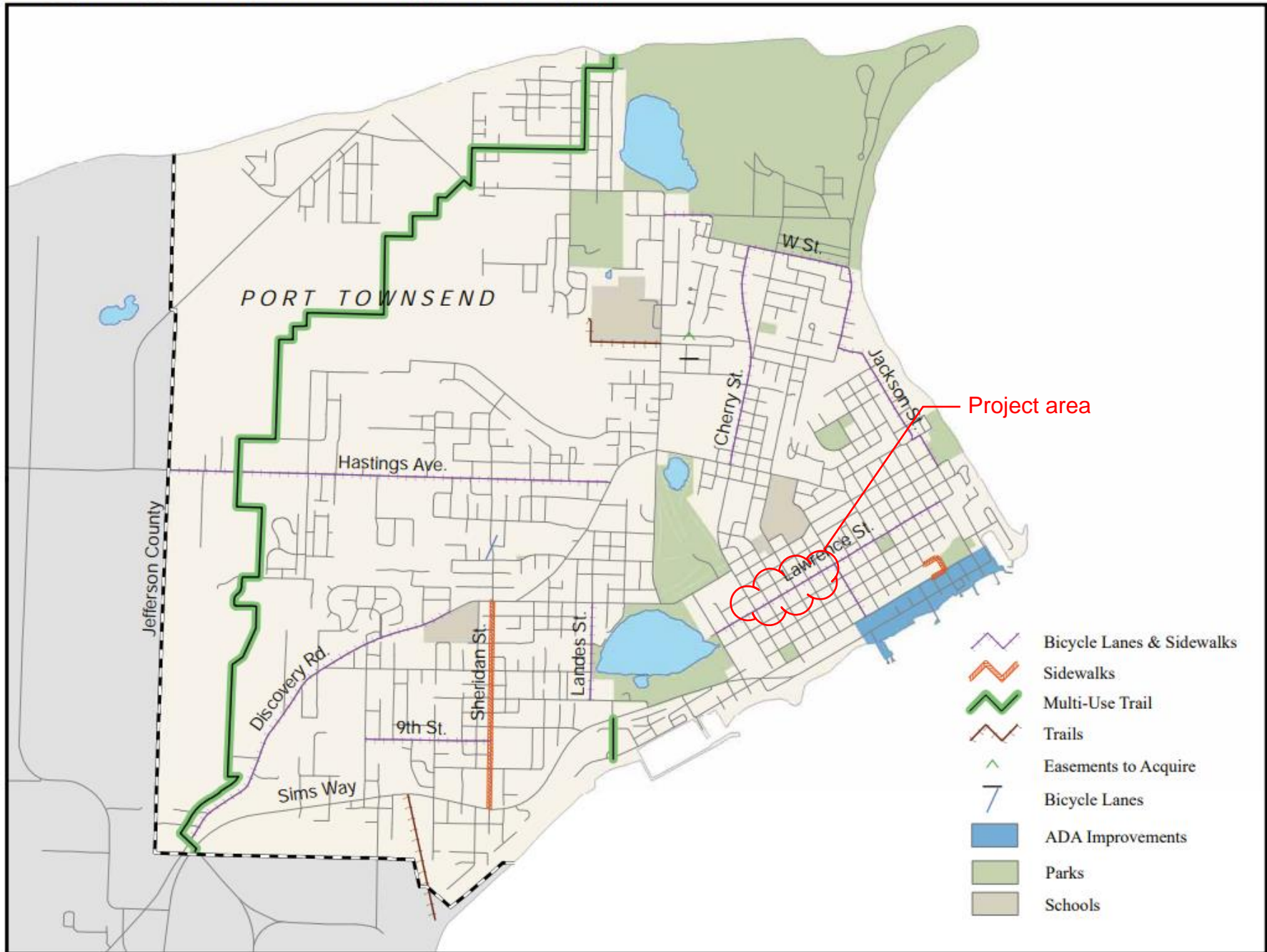
**FIGURE 4.2 BIKEWAY SYSTEM INVENTORY**



## TABLE 4-2 BIKEWAY PLAN - SPECIFIC STREET DETAIL

Street	Future Class	Short-term < 5years	Long-term >5 years	Comment
Lawrence Street	II	Improved shoulders / bike lanes		
Cherry Street	III	Fog lines	Improve paved shoulder to 3' min	
Sheridan Street <i>Sims Way to 19<sup>th</sup> Street</i>	II	Stripe bike lanes		
Sims Way <i>Bluff Corridor</i>	II	Restrict parking	Bike lanes	Access management, On-street parking issue, *Gateway Plan
Sims Way <i>Sheridan to Landes</i>	II	Improved shoulder	Bike lanes	
San Juan <i>F to 19th</i>	II		Improved shoulder	
F Street <i>San Juan to Tyler</i>	II/III	Restrict parking Improve road edge	Climbing lane Downhill shoulder	Uphill Class II
Washington Street	II uphill	Stripe uphill bike lanes		
Cook Avenue <i>Peary to City limit</i>	III	Fog lines	Climbing lane, 2-3 foot shoulder	
49 <sup>th</sup> Street <i>Cook Ave. to San Juan Avenue</i>	III	Fog lines	Widen shoulder	Traffic calming may be used on narrowest portion
Discovery Road <i>Hastings to San Juan</i>	III	Improved shoulder		Improve angle of intersection for sight distances
Discovery Road <i>19<sup>th</sup> to City limits</i>	II		Improved shoulder / Bike lanes	Class III as first stage
Walnut and Jackson Street <i>Monroe to Reed</i>	II		Bike lanes	Two streets form a one-way couplet
14 <sup>th</sup> Street and 12 <sup>th</sup> Street <i>Sheridan to Landes</i>	II/III		Climbing lane Downhill shoulder	12 <sup>th</sup> as class III downhill 14 <sup>th</sup> as class II uphill
Landes Street <i>12<sup>th</sup> to 19<sup>th</sup> Street</i>	III	Stripe fog lines		
Hastings <i>Sheridan to Discovery</i>	II	Stripe fog lines	Improved shoulder	
Kearney Street	II		Improved shoulder / bike lanes	

**FIGURE 5.3 PRIORITY PROJECTS 2010**





# UPTOWN & DOWNTOWN NEIGHBORHOODS

## KEY ISSUES

Strengthen connections between uptown and downtown areas, with improvements at:

- \* “Baby- buggy trail”
- \* Tyler - Jefferson - Quincy route

\* Staircase

Improve nonmotorized facilities on network of primary collector and arterial streets.

- \* Sim’s Way to Water Street
- \* Lawrence, Cherry, and “F” Streets

Focus on improvements near and on routes to schools.

- Port Townsend High School
- Mountain View Elementary

Add site amenities (bike racks, etc.) at commercial and public facilities.

- Uptown & downtown retail areas
- Post office, City Hall, Library, etc.

Assist nonmotorists up hills with bike climbing lanes and / or resting areas.

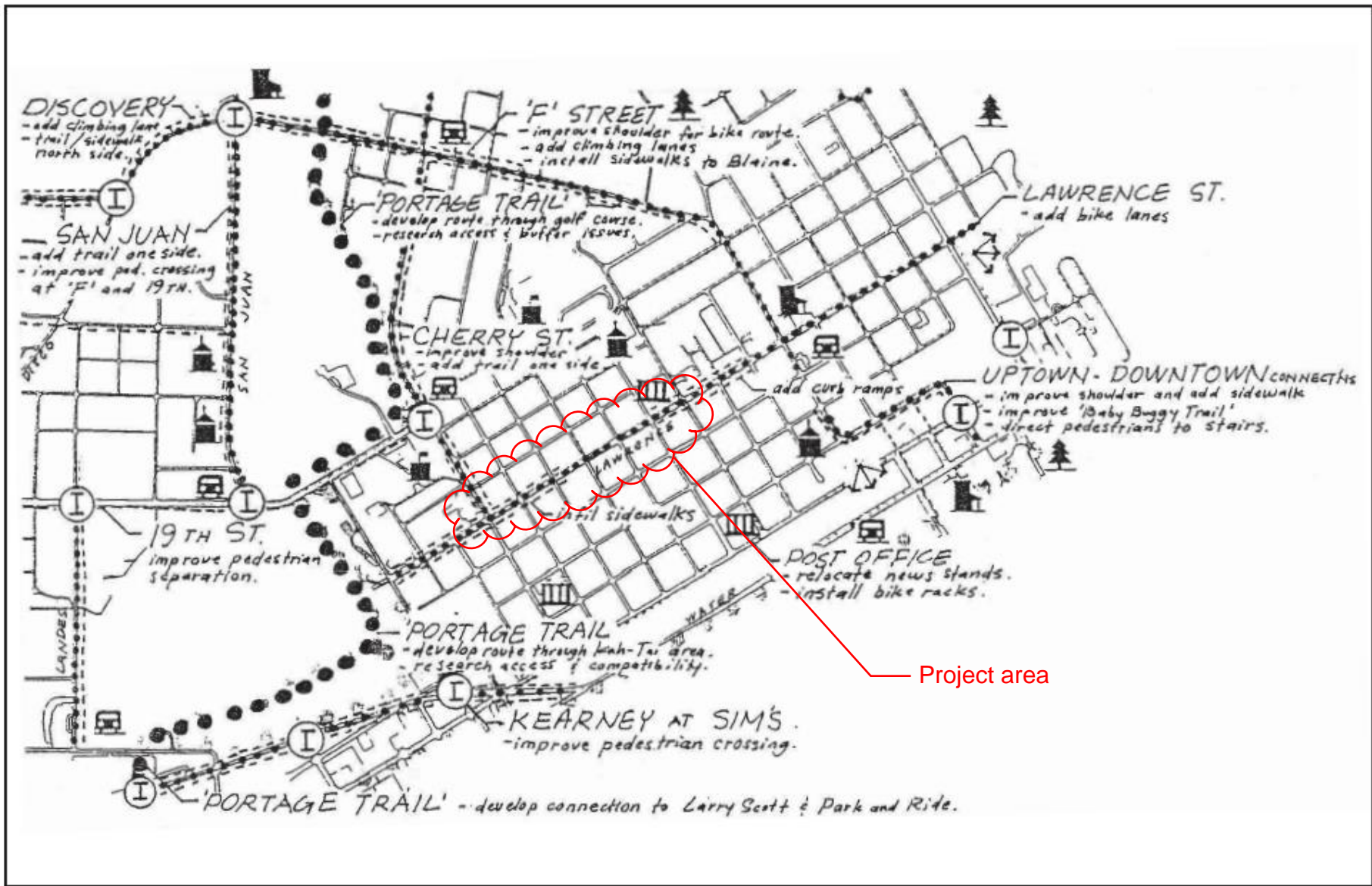
- “F” Street
- Jefferson Street - Quincy to Tyler
- Lawrence Street - Kearney to Walker

Improve key intersections with crosswalks and / or traffic calming.

Development of multi-use trail route through golf course and Kah - Tai Lagoon

- Access through Port of Port Townsend (Kah-Tai)
- Safety issues through golf course.

Lawrence Street is a priority street for ADA access to Uptown and the Farmer's Market

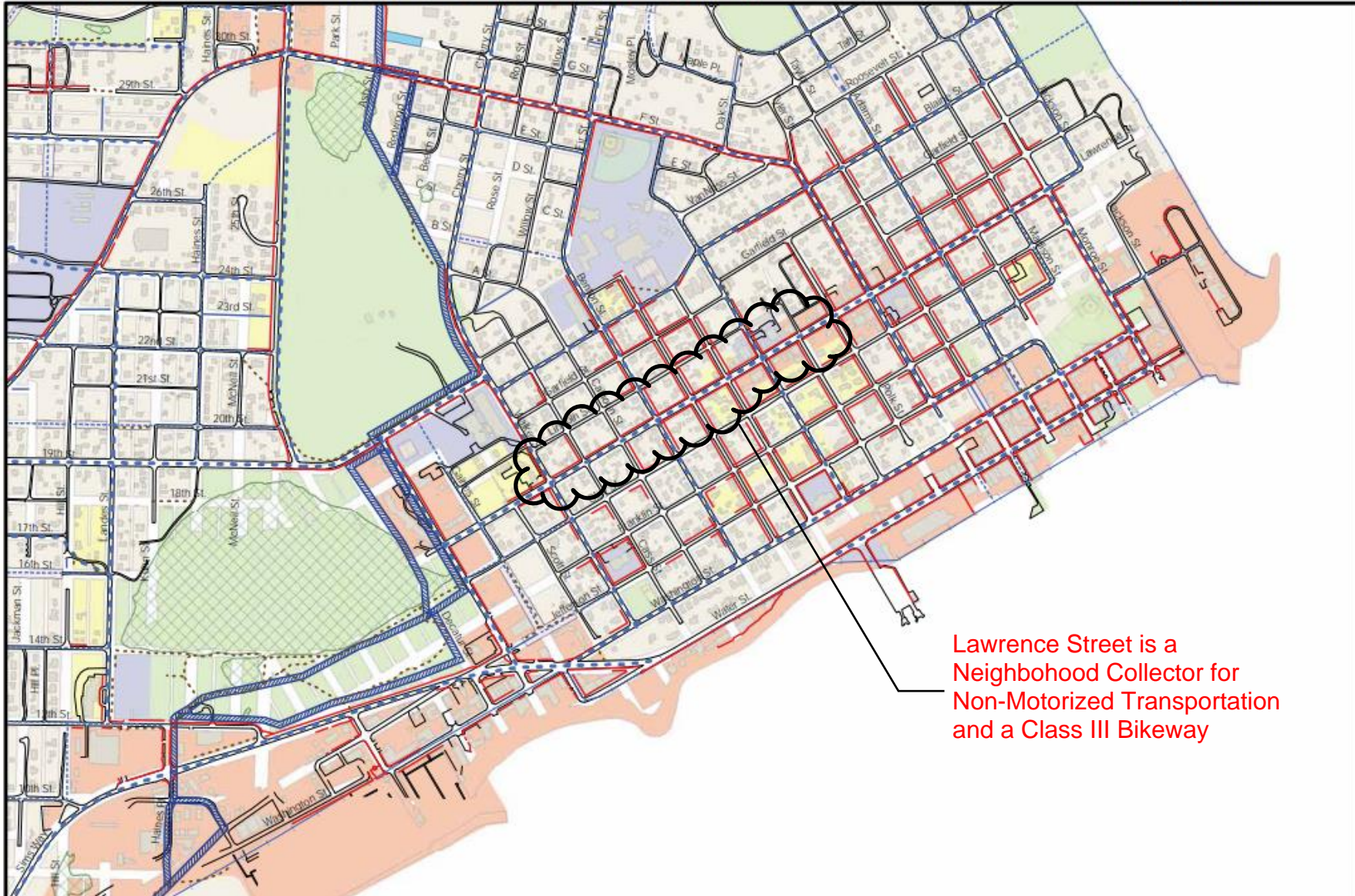


## UPTOWN & DOWNTOWN NEIGHBORHOODS

# UPTOWN & DOWNTOWN NEIGHBORHOODS

1 inch = 1,000 feet

U



Lawrence Street is a Neighborhood Collector for Non-Motorized Transportation and a Class III Bikeway

- |                                  |  |                         |
|----------------------------------|--|-------------------------|
| Multi-Use Trail                  | Rights-of-Way to be Preserved Where Possible | Commercial Area         |
| Neighborhood Connector           | Rights-of-Way to be Acquired                 | Public / Infrastructure |
| Secondary Neighborhood Connector | Existing Trail                               | Public / Open Space     |
| Shortcut                         | Existing Sidewalk                            | Multi-Family            |
| Waterwalk                        | Wet Area                                     |                         |

Note:  
Walkway alignments shown indicate preferred routes. The actual alignment of the walkway may vary when constructed depending on local conditions. Existing trails are designated on this map to assist the City in determining appropriate pedestrian connections during project development review. Designation of existing trails is for planning purposes only and does not represent a determination of prescriptive easements or public use of privately owned properties.

## Lawrence Street is an important route for public transit service provided by Jefferson Transit



### #11 A/B Shuttle Route

The shuttle runs two identical loops in opposite directions, through uptown and downtown Port Townsend, starting at [Haines Place Park and Ride](#). It is great for commuting to or from work, or to visit one of the many eateries or shops along Water Street. Ride the entire route for great views of Victorian architecture and possibly some local wildlife.

